



# JATENGLAND INDUSTRIAL PARK SAYUNG

**THE ULTIMATE CHOICE FOR YOUR INVESTMENT**

**SEMARANG - DEMAK KM 14,7 - CENTRAL JAVA**

Developed by :



**JATENG LAND**  
INDUSTRIAL ESTATE

# ABOUT JATENGLAND INDUSTRIAL PARK SAYUNG



Property (Industrial Estate) :  
PT Jawa Tengah Lahan Andalan  
(Jatengland), which is the superintendent  
and developer of Jatengland Industrial  
Park Sayung (JIPS), is a subsidiary of  
Mugan Group



JATENGLAND  
INDUSTRIAL ESTATE



// IG : kawasanindustrijips // [www.jatengland.com](http://www.jatengland.com) // 024 769 288 22 // The Ultimate Choice for Your Investment //

# VISION AND MISSION

---

## VISION

**To be a trusted, competitive and sustainable industrial estate**

## MISSION

**To be a pleasant and high value investment - industrial estate  
To develop industrial estate's qualities effectively and efficiently  
To expand technological basic services**



// IG : kawasanindustriips // [www.jatengland.com](http://www.jatengland.com) // 024 769 288 22 // The Ultimate Choice for Your Investment //

# LOCATION



## Demak to Jakarta

- 55 min via International Ahmad Yani Airport  
Nonstop 28 flight per day
- 15 h via Tanjung Mas Seaport
- 9 h 44 min via Pantura Access
- 5 h 48 min via Tawang Railway Station

## Demak to Surabaya

- 50 min via International Ahmad Yani Airport  
Nonstop 7 - 8 flight per day
- 12 h 30 min via Tanjung Mas Seaport
- 6 h 52 min via Pantura Access
- 4 h 10 min via Tawang Railway Station

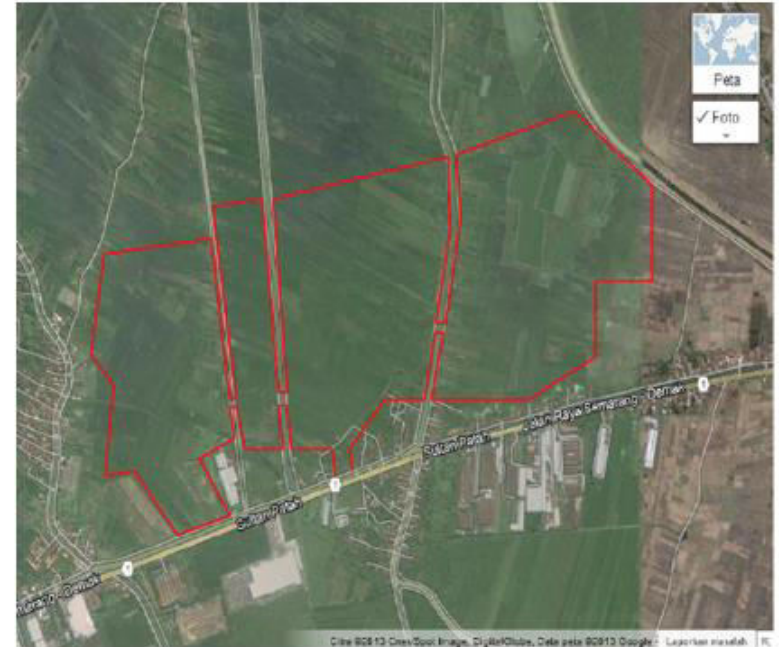
**25 KM**  
40 minutes  
JIPS to International Ahmad Yani Airport  
Semarang

**15 KM**  
20 minutes  
JIPS to Tanjung Mas Seaport  
Semarang

**20 KM**  
25 minutes  
JIPS to Tawang Railway Station  
Semarang



Jatengland Industrial Park Sayung



**Jl. Raya Semarang Demak Km 14,7 Batu - Kr Tengah - Demak - Jawa Tengah**



// IG : kawasanindustrijips // www.jatengland.com // 024 769 288 22 // The Ultimate Choice for Your Investment //

# LEGAL LICENSE



**Environmental License**  
**AMDAL // No 660.1/361/2015**

**Industrial Estate License**  
**SIUKI // No 21/3321/IU/PMDN/2015**

**Pinciple License**  
**PRINSIP // No 13/33/IP/PMDN/2013**

**Location Permit**  
**LOKASI // No 503.02/01642/III/2014**

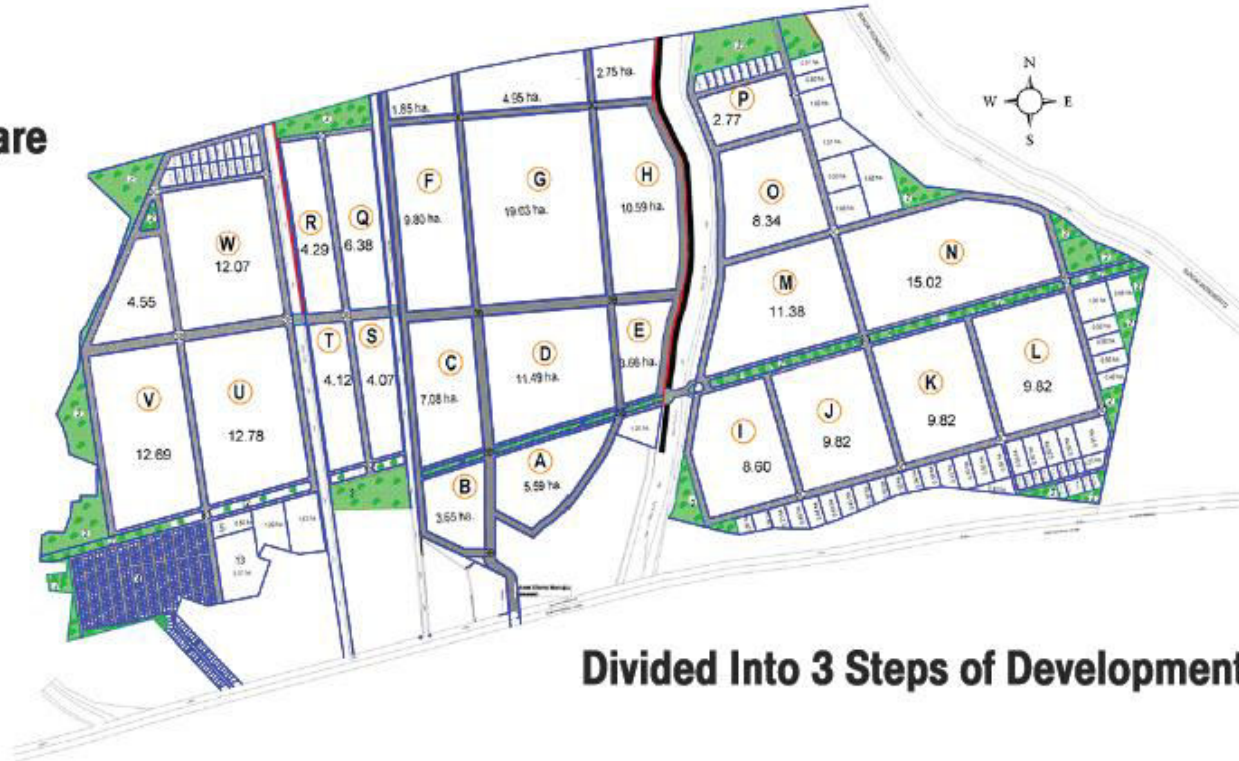
**Kemudahan Layanan Investasi Langsung Konstruksi**  
**KLIC BKPM // No 17/2017**



// IG : kawasanindustrijips // www.jatengland.com // 024 769 288 22 // The Ultimate Choice for Your Investment //

# SITEPLAN JIPS

**300** Hectare



**Divided Into 3 Steps of Development**



// IG : kawasanindustrijips // [www.jatengland.com](http://www.jatengland.com) // 024 769 288 22 // The Ultimate Choice for Your Investment //

# SITEPLAN JIPS

PHASE 3



70 ha

PHASE 1



110 ha

PHASE 2



120 ha



// IG : kawasanindustrijips // [www.jatengland.com](http://www.jatengland.com) // 024 769 288 22 // The Ultimate Choice for Your Investment //

# FACILITIES

Human Capital			Gasoline
Transportation Service			Electricity
Housing and Apartment			Commercial Area
Health Center and Service			Legal Support Service
Link of Export - Import Access			Industrial Water Supply
Safety Equipment Support (K3)			Business Development Unit
Meeting Room and Convention Hall			24 Hour Technician Support
			Cleaning Service Management



// IG : kawasanindustrijips // [www.jatengland.com](http://www.jatengland.com) // 024 769 288 22 // The Ultimate Choice for Your Investment //



# FACILITIES

---



**WATER SUPPLY** PDAM



**ELECTRICITY** PT PLN



**GAS** PT PERTAGAS



**COMMUNICATION** PT TELKOM



// IG : kawasanindustrijips // [www.jatengland.com](http://www.jatengland.com) // 024 769 288 22 // The Ultimate Choice for Your Investment //

# Existing Condition

Block G



Blok C



Blok B



110 ha

Block E2



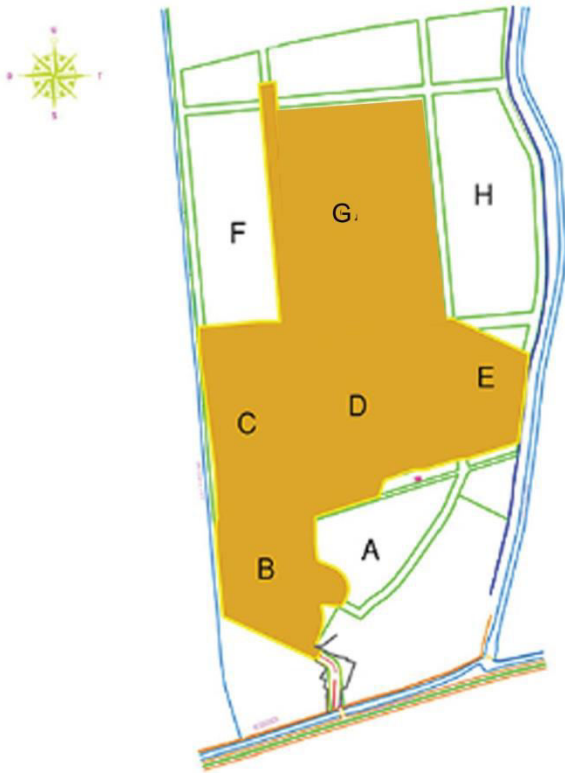
Block D



Commercial Area



# Existing Condition



# Existing Conditions



// IG : kawasanindustriips // [www.jatengland.com](http://www.jatengland.com) // 024 769 288 22 // The Ultimate Choice for Your Investment //

# MASTER PLAN



// IG : kawasanindustriijips // [www.jatengland.com](http://www.jatengland.com) // 024 769 288 22 // The Ultimate Choice for Your Investment //

# MASTER PLAN



// IG : kawasanindustriips // [www.jatengland.com](http://www.jatengland.com) // 024 769 288 22 // The Ultimate Choice for Your Investment //

# MASTER PLAN



// IG : kawasanindustriips // [www.jatengland.com](http://www.jatengland.com) // 024 769 288 22 // The Ultimate Choice for Your Investment //

# MASTER PLAN



// IG : [kawasanindustrijips](#) // [www.jatengland.com](#) // 024 769 288 22 // The Ultimate Choice for Your Investment //



# MASTER PLAN



// IG : kawasanindustriips // [www.jatengland.com](http://www.jatengland.com) // 024 769 288 22 // The Ultimate Choice for Your Investment //

# MASTER PLAN



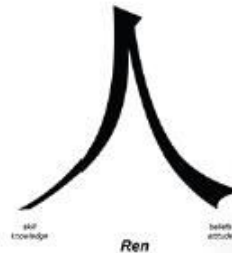
// IG : kawasanindustrijips // [www.jatengland.com](http://www.jatengland.com) // 024 769 288 22 // The Ultimate Choice for Your Investment //

# LANDMARK (人) MEANING

It relates to Confusian concept :  
“Ren” represents : goodness, benevolence and love.  
Every human being has the capacity to possess ren.  
More, ren manifests itself when a virtuous person treats others with humaneness. “Ren” also has the meaning about the ability to achieve 5 important things, which are : respect, sincere, trust, competent and tolerant.

Our landmark has a philosophical message :  
PT Jawa Tengah Lahan Andalan provides excellent services with “ren” manifestations. Consequently, the implementation of “ren” could create a pleasant atmosphere for a good prospect towards all of us.

THE PHILOSOPHY  
of  
LANDMARK



// IG : kawasaindustrijiips // [www.jatengland.com](http://www.jatengland.com) // 024 769 288 22 // The Ultimate Choice for Your Investment //

# Semarang – Demak Toll Road





The Ultimate Choice for Your Investment

*Thank You*



// IG : kawasanindustriips // [www.jatengland.com](http://www.jatengland.com) // 024 769 288 22 // The Ultimate Choice for Your Investment //